

Material: 85% cotton 10% polyester 5% spandex
Color: grey,black,blue or as customized
Size: men
MOQ: 1000 pairs / color
Feature: comfortable,sweat-absorntion,breathable,soft
Packing: as per customer's requirment
Trade Term: EXW or FOB

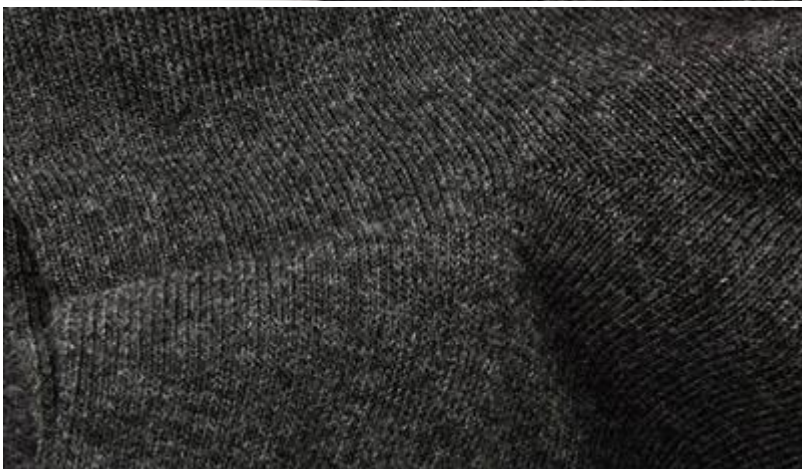
[**more men socks here**](#)



CE FC



CE FC



| | | | |
|-------------------|--------------------------------------|------------|-------------------------------------|
| Brand Name: | JIXINGFENG | Style: | men business socks |
| Supply Type: | OEM / ODM, customized manufacture | Material: | 85% cotton 10% polyester 5% spandex |
| Technics: | Knitted | Age Group: | men |
| Place of Origin: | Guangdong, China (Mainland) | Size: | 20-22 cm |
| Year Established: | 2003 | Weight: | 55-60 g / pair |
| Main Markets: | Europe, North America, Oceania, Asia | Season: | Spring, Summer, Autumn, Winter |
| Quality: | best quality | Colour: | black, grey, blue |
| Feature: | Breathable, Eco-Friendly, Quick Dry | MOQ: | 1000 pairs / color |
| Sample: | we can do samples for you | Logo: | We can put your logo on socks |



More Product





吉行风
JI XING FENG

Production Process



Packing & Shipping:

- 1)one pair a polybag, 1 dozen a big polybag, 360 pairs one carton.
- 2)or as per customer's requirment.
- 3)shipping by sea,air,express delivery.



Company Information:

Over a Decade of Sock Manufacturing Experience

Founded in 2003, Jixingfeng Knitting Factory is a professional OEM socks and tights hosiery manufacturer which has more than 200 machines and hundred-odd workers. With over 14-year experience, we can provide you with strong technical support.

Offering a Wide Range of Products

Our main products include all kinds of men, women, children and baby socks, and also mobile bags, leggings, headbands and many different knitted products. So you're able to find the products you need easily from us.

Monthly Production Capacity of 400,000 Pairs

Our 3,000-square-meter factory is equipped with advanced machines procured from Germany, Taiwan and mainland China. With such support, we have a monthly output of 400,000 pairs, which can fill your volume orders.





Contact Information

TEL:86-0757-85657751

FAX:86-0757-85623331

MP:86-13326795658

E-MAIL:jixingfeng@jxffactory.com

ADDRESS:Dabu Management Area,Lishui Town,

Nanhai District,Foshan City,GuangDong

Your satisfaction is our ultimate goal .

